

# 214 | Harschbichl I

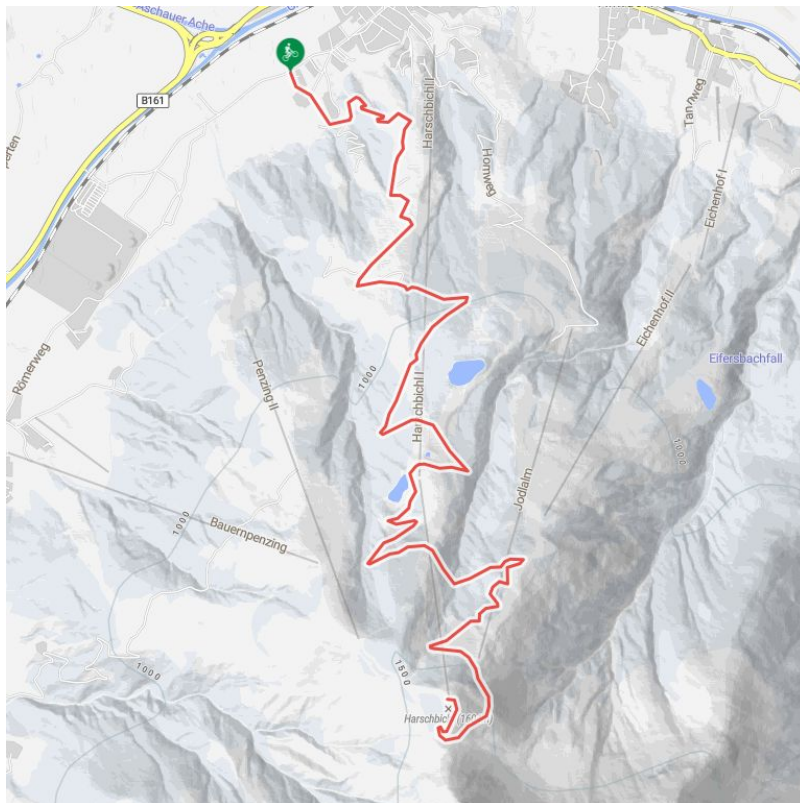
distance	9,0 km	difficulty	average
----------	--------	------------	---------

altitude meters uphill	940 m
------------------------	-------

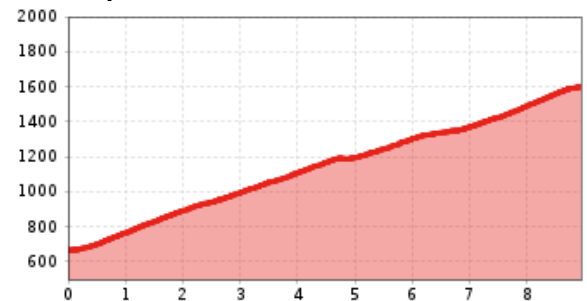
starting point:	St.Johann/Apfeldorf
-----------------	---------------------

destination point:	Harschbichl
--------------------	-------------

best season:	MAY, JUN, JUL, AUG, SEP, OCT
--------------	------------------------------



Altitude profile



## Description

The route starts in the Apfeldorf district of St. Johann in Tirol and leads along the winding road towards Berglehen. Follow the forest road, past the middle station with a small pond where you can take a break, to the mountain lake Angerer Alm and then on to the mountain station of the St. Johann cable cars "Harschbichl". From there you have a fantastic panoramic view and there are many cosy places to stop and rest along the way.

## downloads

[GPX FILE](#)[INTERACTIVE MAP](#)

