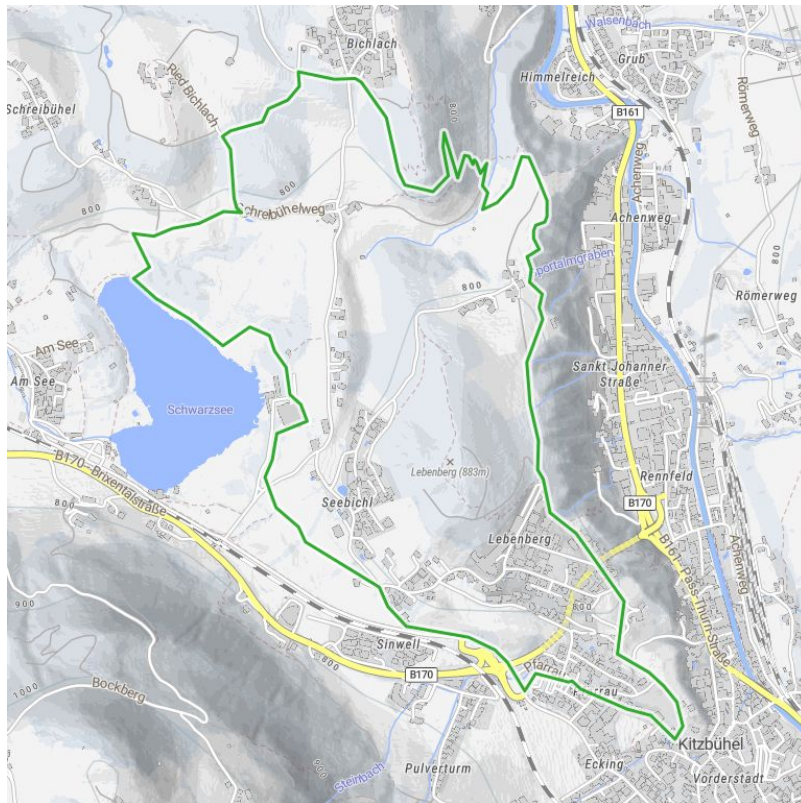


# Achrain

A beautiful mix of trails and tarmac that is also suitable for trail running beginners. At the finish, there's the legendary view over the church towards the southern mountains.

distance	7,4 km	difficulty	average	
altitude meters uphill	193 m	altitude meters downhill	193 m	highest point 841 m
best season: MAY, JUN, JUL, AUG, SEP, OCT				



Altitude profile



## Description

Start the Pfarrau-Lebberg Loop by the Pfarrau parking lot. Head briefly towards Schwarzsee, but turn towards Lebberg following the signs, then again towards Schwarzsee. Pass behind the Alpenhotel and cross the boardwalk through the moor area and briefly next to the Schwarzsee. Turn right through a short forest section, enjoying the beautiful view of the "Wald am See" farm and continue towards Bichlach, following the signs on alternating gravel, asphalt, and trail sections. After approximately 4km, you'll find a short but scenic downhill trail leading towards Achrain. A small climb precedes this, passing Achrainhof towards Lebberg and the town. Arrive slightly above the cemetery, where you'll be treated to the legendary view of the Kitzbühel churches and southern mountains. Follow the signs downhill, with a brief uphill stretch, back to the starting point.

## downloads

[GPX FILE](#)

[INTERACTIVE MAP](#)

