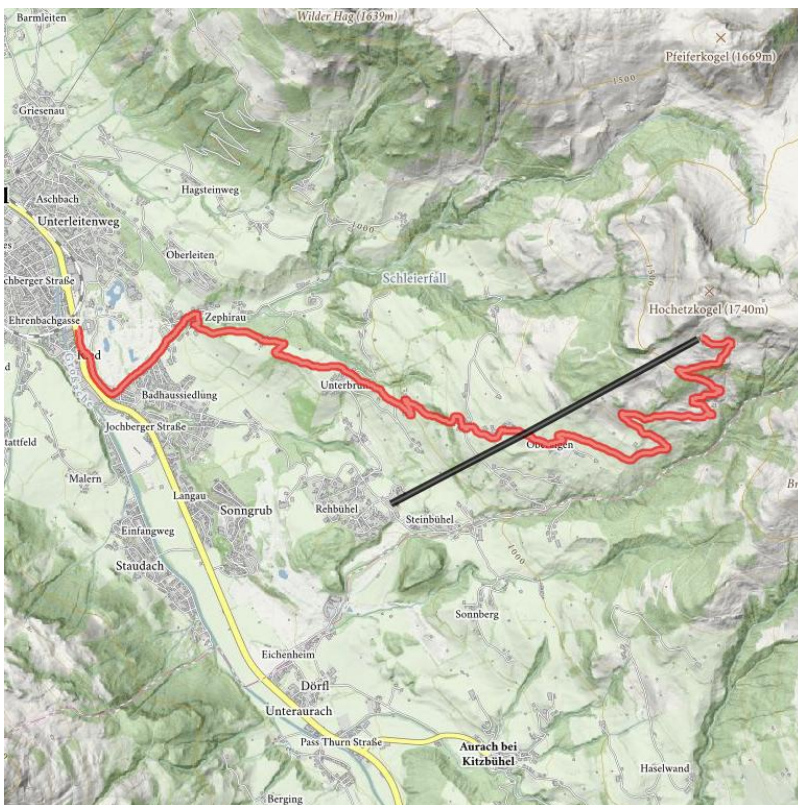
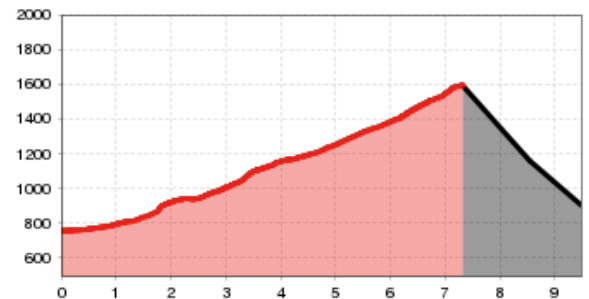


Alter Sonnbergweg

total walking time	3:30 h	distance	7.6 km	difficulty	average
altitude meters uphill	898 m	altitude meters downhill	59 m	highest point	1597 m
starting point:	Tennis stadium				
destination point:	Bichlalm				
road quality:	asphalt, gravel roads, alpine roads, mountain paths				



Altitude profile



Description

The start of the hike is at the tennis stadium. Following the road to the right, turn at the roundabout towards Zephirau. Follow the path into the valley in the direction of the Schleier waterfall until you turn right at the crossroads in the direction of Ebnerkapelle - Bichlalm. Follow the Alter Sonnbergweg until you reach Rosi's Sonnbergstuben. Here the large sun terrace invites you to linger. Strengthened, the trail continues via Oberaigen to the highlight of the hike - the Bichlalm. Enjoy the surrounding mountain panorama before taking the Bichlalm lift back down to the valley.

Route

Tennisstadion - Zephirau - Richtung Schleierwasserfall - Ebnerkapelle - Rosi's Sonnbergstuben - Oberaigen - Bichlalm

equipment

Sturdy, ankle-high footwear, functional mountain clothing, waterproofs, sun protection, plenty to drink, a comfortable rucksack, hiking poles, snacks

arrival

Parking spot

P7 - parking Casino Stadium
Parking Bichlalm

hut/alpine hut

Alpengasthof Bichlalm

downloads

[GPX FILE](#)

[INTERACTIVE MAP](#)



