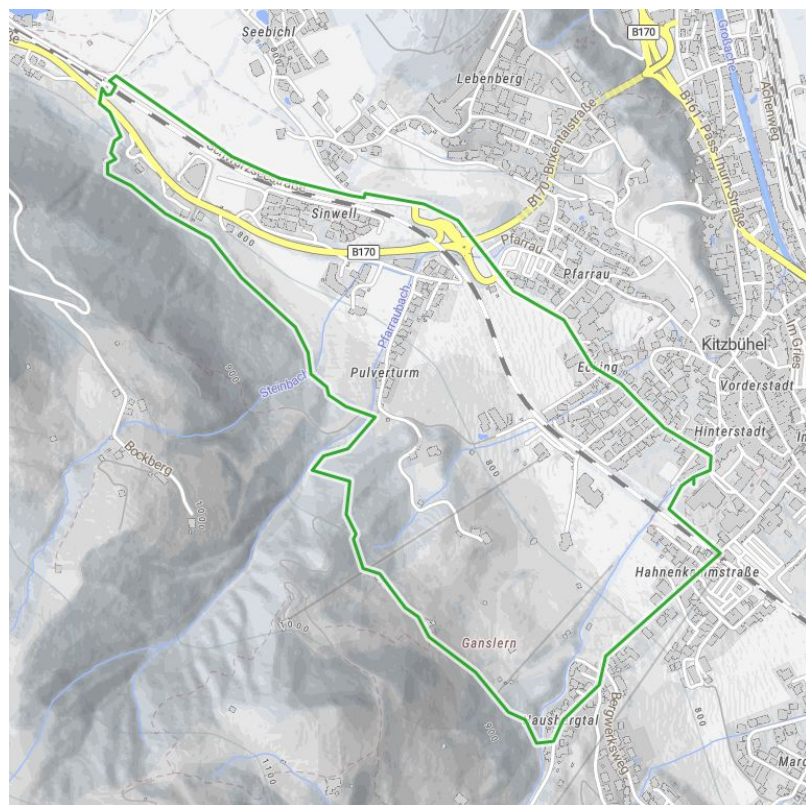


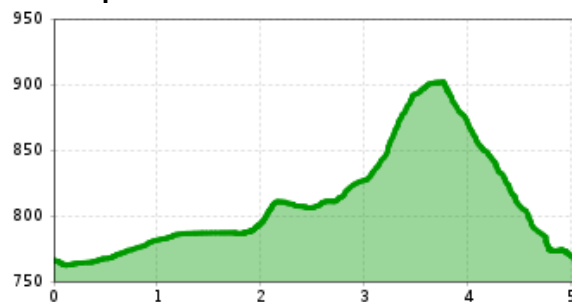
Ganslern Trail

Mixed trail and tarmac circuit with a detour to the famous Ganslern Slope. This is where the skiing slalom race takes place at the Hahnenkamm Race in winter.

distance	5,1 km	difficulty	average		
altitude meters uphill	161 m	altitude meters downhill	161 m	highest point	937 m
best season:		MAY, JUN, JUL, AUG, SEP, OCT			



Altitude profile



Description

The Ganslern Trail fittingly starts in Legends Park behind the Aquarena. Begin by running on asphalt towards the city center, and at the small roundabout, turn left onto Schwarzsee street. Run comfortably on the sidewalk until you reach the Schwarzsee railway station. A small tunnel takes you under the tracks, and after crossing the main road, you'll join a pleasant trail with views of Kitzbühel. Follow this trail until just before the "Pulverturm," where you turn right onto a steadily rising road leading to Ganslern Hut, located in the middle of the famous ski World Cup slope. Cross the Streif on a hiking path, pass under the large illuminated Kitzbühel Logo "The Gams" towards Schattberg, and then descend back towards the city. Right after the railway crossing, turn left and return to the starting point in Legends Park.

downloads

[GPX FILE](#)[INTERACTIVE MAP](#)

