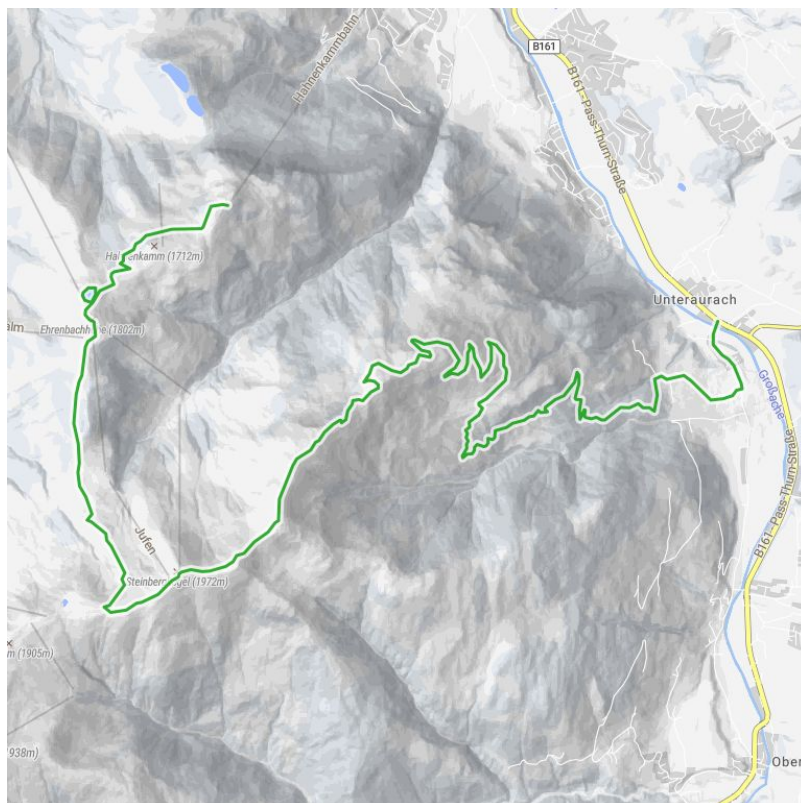


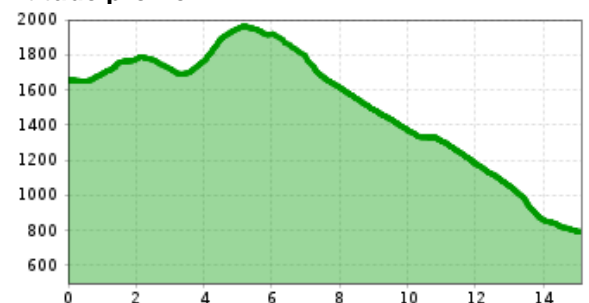
Hahnenkamm-Aurach

Over the heights of the Hahnenkamm to Aurach

total walking time	5 h	distance	16,0 km	difficulty	average
altitude meters uphill	401 m	altitude meters downhill	1253 m	highest point	1951 m
starting point:	Mountain station Hahnenkammbahn				
destination point:	Unteraurach				
road quality:	asphalt, gravel, mountain paths				



Altitude profile



Description

Start of the hike is the Hahnenkamm mountain station. From there, the summer experience Streif takes you in the direction of the St. Bernhard Chapel. The next vantage point of the hike is the Ehrenbachhöesee. Passing the Hochbrunn mountain restaurant, the hike turns left onto the Steinbergkogel (1,927m). There you can enjoy the view as far as the Hohe Tauern. Via the Blaufeldalm and the Malernalm you descend again to Unteraurach. From there you can take the bus back to Kitzbühel.

Route

Hahnenkamm Bergstation - St. Bernhard Kapelle - Hochbrunn - Jufen - Steinbergkogel - Obere Blaufeldalm - Pirchneralm - Malernalm - Unteraurach

equipment

ankle-high, sturdy shoes, functional clothing suitable for the mountains, rain protection, sun protection, plenty of drinks, comfortable rucksack, hiking poles, snack

arrival

Parking spot

P1 - parking Hahnenkamm-cablecar

hut/alpine hut

[Hochkitzbühel by Tomschy](#) open

[Hahnenkammstüberl](#) closed

[Berghaus Tyrol](#) closed

[Hochbrunn](#) closed

downloads

[GPX FILE](#)

[INTERACTIVE MAP](#)

