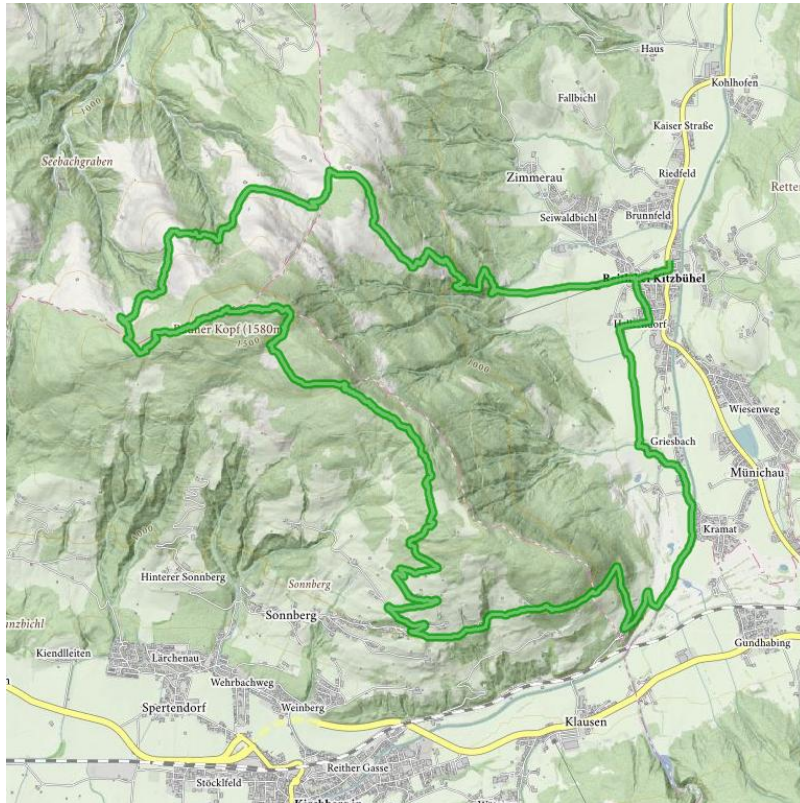


Kaiserblick trail

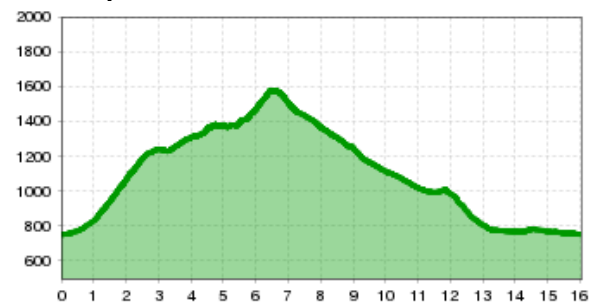
distance	16 km	difficulty	difficult
-----------------	-------	-------------------	-----------

altitude meters uphill	951 m	highest point	1577 m
-------------------------------	-------	----------------------	--------

starting point:	Kulturhaus Reith
------------------------	------------------



Altitude profile



Description

As the name suggests, here you can expect a beautiful view of the Wilder Kaiser. But first we start in Reith, from here it goes through the village, on asphalt and then on a meadow path towards the golf course Kitzbühel-Schwarzsee. We leave it to the left and walk towards Hennleiten from where it then goes to the Rauhen head. Alternatively via forest roads we walk towards the Peace Cross on the Rauhen head. At the summit you can enjoy the view to Kirchberg and the Great Rettenstein before it goes down on a trail again. Here, too, trails and forest roads alternate and the view of the Wilder Kaiser opens. We walk towards Reith and Wirtsalm. From the leads a spectacular trail down, almost in the middle of the village center.

arrival

Parking spot

Parking place Kulturhaus

downloads

[GPX FILE](#)

[INTERACTIVE MAP](#)

