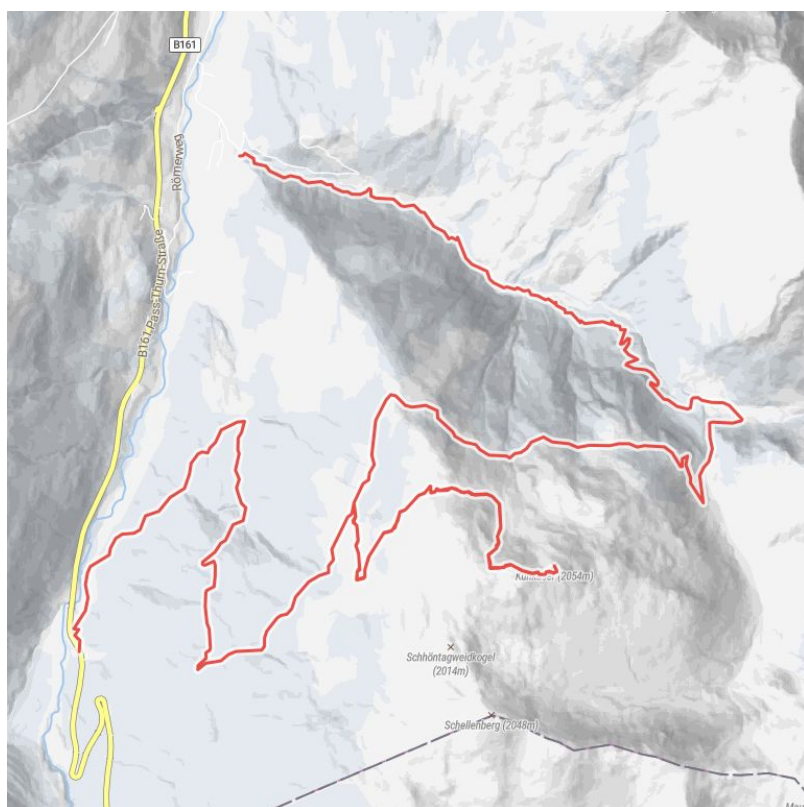


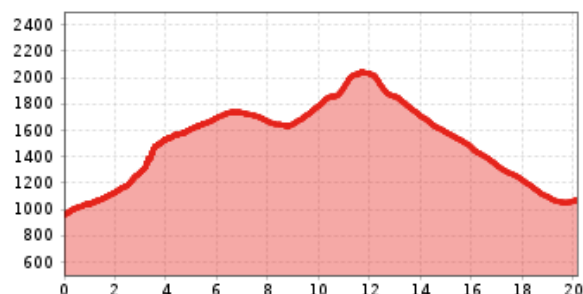
# Kuhkaser

With its height of 2,054m, the Kuhkaser is certainly one of the most beautiful viewing mountains in Jochberg, Kitzbühel.

total walking time	8 h	distance	20,0 km	difficulty	average
altitude meters uphill	1540 m	altitude meters downhill	1431 m	highest point	2049 m
starting point:	Jochberg, Parkplatz Schradler				
destination point:	Jochberg Wald				



Altitude profile



## Description

Follow signs to Sintersbach waterfall, take the turnoff towards the Sintersbach Niederalp mountain hut and continue to the Schöntagweidalm mountain hut. This is the start of the climb up to the summit of Kuhkaser, which leads through an area of beautiful alpine pastures characteristic of Kitzbühel's grass mountains. The route back down goes back past the Schöntagweidalm mountain hut and then continues along the signposted route towards Jochberg Wald (Jochberg forest).

## Route

Parkplatz Schradler, Richtung Sintersbacher Wasserfall, Sintersbach Niederalp, Schöntagweidalm, Kuhkaser, Schöntagweidalm, Jochberger Wald, Alte Wacht

## equipment

Sturdy, ankle-high footwear, functional mountain clothing, waterproofs, sun protection, plenty to drink, a comfortable backpack, hiking poles, snacks

## arrival

**Parking spot**  
Parking Schradlern

## downloads

[GPX FILE](#)

[INTERACTIVE MAP](#)

