

Malern Walk

An easy run that takes us to the beautiful district of Malern. A technically easy, short run that is nevertheless very rewarding.

distance 5,3 km

altitude meters uphill 75 m

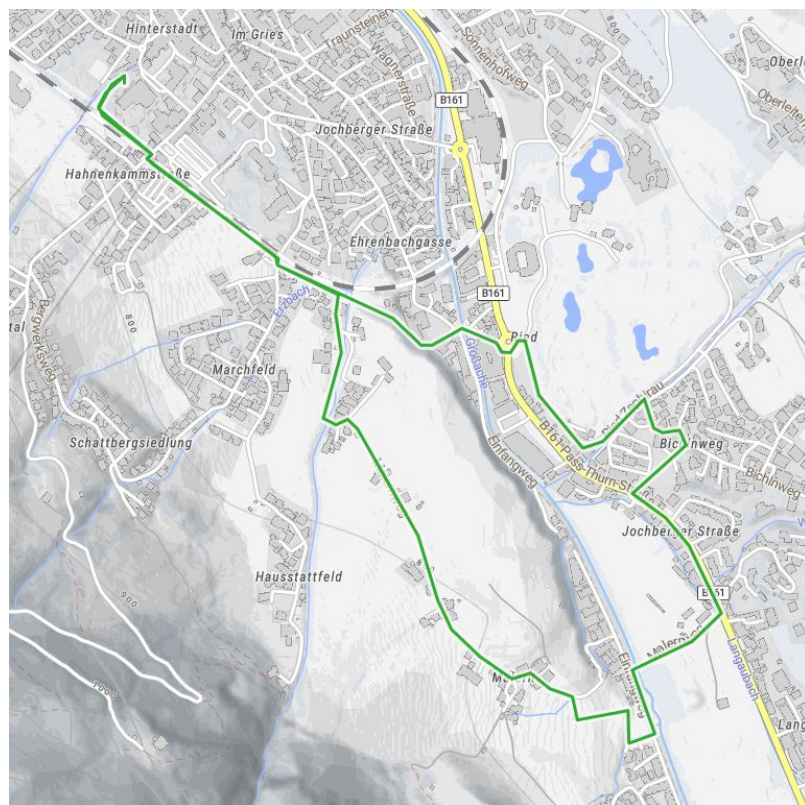
altitude meters downhill 75 m

highest point

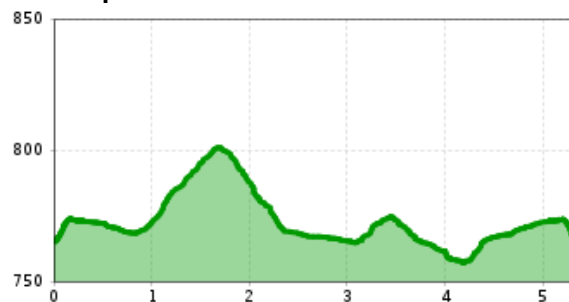
802 m

best season:

MAY, JUN, JUL, AUG, SEP, OCT



Altitude profile



Description

Start the Malern Walk at Legends Park behind the Aquarena in Kitzbühel. Follow the railway tracks towards the Hahnenkamm Station. At the railway crossing, cross the tracks and continue through the parking lot, following the signs south and turning onto Malernweg. Follow Malernweg briefly until the Malern junction, then turn right. Enjoy the stunning views of the southern mountains as you reach Malern Hof at the 2 km mark, then turn left towards Einfang. Turn left again and immediately right towards the sports field. Follow the road towards Kitzbühel, and shortly after the 3 km mark, turn right. Keep an eye on the signs as you turn left towards Zephirau, then continue to the roundabout. Cross the roundabout, briefly run on Ehrenbach street, then take a left onto Malernweg, returning to the initial route. Follow this path back to the starting point.

downloads

[GPX FILE](#)

[INTERACTIVE MAP](#)

