

Schwarzsee Loop

The must-do classic in Kitzbühel. A wonderful loop around the Schwarzsee lake with fantastic views of the Wilder Kaiser.

distance 2,5 km

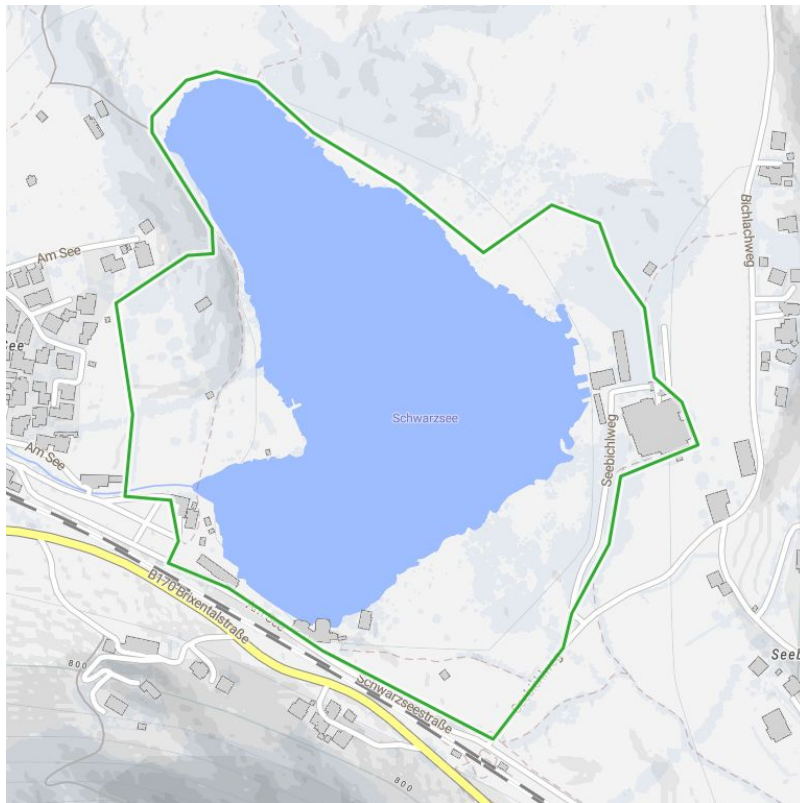
altitude meters uphill 33 m

altitude meters downhill 33 m

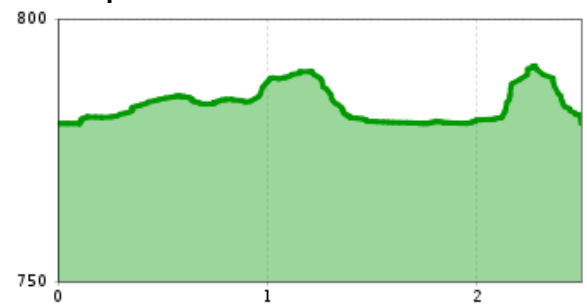
highest point

799 m

best season: MAY, JUN, JUL, AUG, SEP, OCT



Altitude profile



Description

Schwarzsee is one of the most beautiful spots in Kitzbühel and perfect for exploring on a run. The Schwarzsee Loop is only 2.5 kilometers long, making it ideal for beginners or running with children. There is a large parking lot at the start, and you can refresh yourself at the Strand Café afterward. Begin with a gentle uphill towards the north into the forest. Most of the route is on a paved gravel path, first uphill and then down to the lake. Follow the path clockwise around Schwarzsee. Enjoy the view as you run through a nature reserve with abundant flora and fauna. Follow the signs to the Alpenhotel, where the path switches to asphalt. Head towards the railway station, then turn right back to the starting point.

downloads

[GPX FILE](#)

[INTERACTIVE MAP](#)

