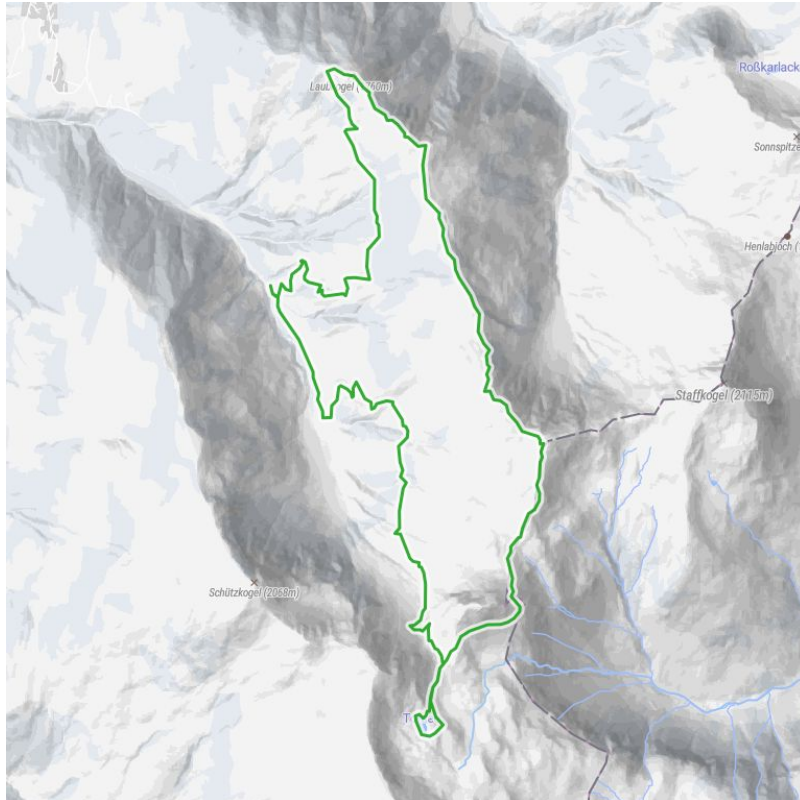


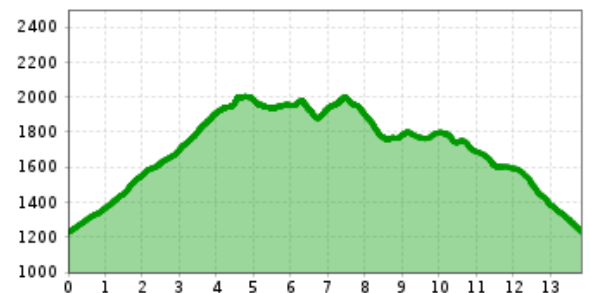
Tristkogel

A rewarding and challenging non-technical tour to one of the most striking mountains in Kitzbühel. This trail is guaranteed to offer fun and connections to nature.

distance	13,8 km	difficulty	difficult	
altitude meters uphill	1103 m	altitude meters downhill	1103 m	highest point 2006 m
best season:	JUN, JUL, AUG, SEP, OCT			



Altitude profile



Description

The starting point for this historic loop is the "Pochwerk" parking lot, where traces of Kitzbühel's mining past can still be found. Follow the signs towards "Tristkogel" into the valley. Initially, the route follows a gravel road, then transitions to a beautiful trail, which occasionally intersects with the forest road, ascending towards "Tor" and "Torsee."

Before reaching "Toralm," turn towards "Torsee," arriving there after a few hundred meters. This stunning natural lake is nestled between "Gamshag" and "Tristkogel," offering a beautiful view towards "Geisstein." Run briefly along the lake, then turn onto a short, steep trail returning to the familiar path.

Return to "Tor" and head towards "Tristkogel," but instead of summiting, follow the easier path along its flank. The summit route requires sure-footedness and a good head for heights. The easier route provides a scenic view into Saalachtal. Continue towards "Saalkogel" and "Rauber," easily taking in these two peaks, then follow the ridge to "Laubkogel." The trails are gentle and manageable, with stunning northern views.

Descend from Laubkogel back into the valley, passing "Kelchalm" (Bochumer Hütte) before returning to the parking lot.

downloads

[GPX FILE](#)

[INTERACTIVE MAP](#)

